



## AB50J

The Snorkel AB50J has a working height of 17.2 m and is driveable at full height. The handy lift boasts a 1.2 m articulating jib boom and 180° hydraulic platform rotation, making it easy to maneuver even in the tightest spots.

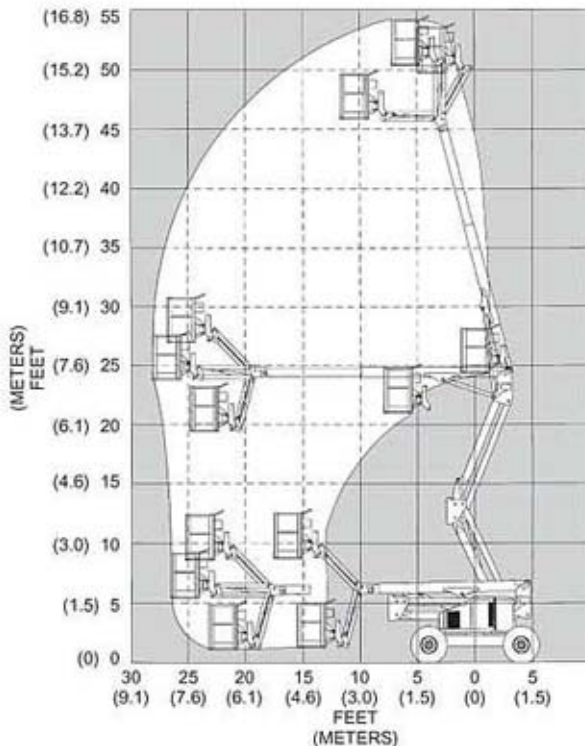
### STANDARD FEATURES

- 4ft 6in (1.2 m) articulating jib boom
- Proportional drive
- Variable speed control functions
- Printed circuit board with on-board LED diagnostics
- Drivable at full height
- 180° hydraulic platform rotation
- 12 volt emergency operated power
- Hydraulic and oil level temp. gauge
- Tilt alarm
- 125 volt GFCI AC outlet at platform
- Hour meter
- Keyed master switch
- Lifting / tie down lugs
- High engine temp. / low oil pressure shut-down system
- Front oscillating axle
- Four wheel drive
- 1 + 5 year warranty



### SPECIFICATIONS

Key Data	
Platform height	15.2m
Working height	17.2 m
Platform size	183 cm x 76 cm
Platform capacity (SWL)	227 kg
Construction	Aluminium
Stowed Height	2.1m
Stowed Length	6.4m
Wheel Base	2.4m
Width	2.3m
Weight	7,092 kg
Ground Clearance	25cm
Tire Size / Type	12 x 16.5 Pneumatic
Horizontal Reach	8.5m
Power Source	Gas or Diesel
Fuel Capacity	56.7 L
Hydraulic Tank Cap	20 gal
Drive Speed Elevated	0.8 km/h
Drive Speed Stowed	5.6 km/h
Gradeability (Theoretical)	57%



Godwin's Garage - Ranger Limited  
 Triq tal-Balal,  
 Tax-Xwieki,  
 Għargħur, GHR 9013  
 MALTA – EUROPE  
 Tel: (+356) 21424771/2/3  
 Mob: (+356) 9949 2584, (+356) 7947 8990  
 Email: info@godwinsgarage.com  
 Web: http://www.godwinsgarage.com