

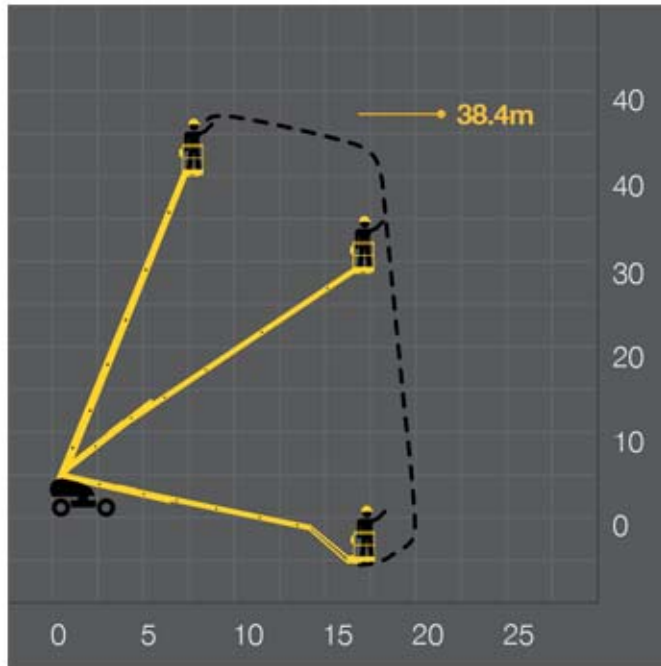


JLG 120HX

The JLG120 improves access to far more areas on site with its 4m articulated boom section. It also includes a high performance telescopic boom lift. This machine has been purposefully designed for a wide variety of demanding maintenance, construction and high reach applications.

STANDARD FEATURES

- Sloped Surface
- Rough Ground
- Level Ground
- Diesel
- Foam filled all terrain tyres
- Noise limited engine
- Extending axles for varied work areas
- Excellent manoeuvrability of machine and platform
- Cage and ground controls
- Outside
- 0.33m ground clearance
- 40% grade ability
- 4 wheel drive and crab steer



SPECIFICATIONS

Platform Height	120 ft. (36.6m)
Working Height	126 ft. (38.4m)
Platform Dimensions-Std.	36' x 72" x 44" (.91m x 1.83m x 1.12m)
Platform Capacity	500 lbs. (227 kg)
Stowed Length	52 ft. 4 in. (15.9m)
Stowed Length (transport)	35 ft. 4 in.11 (10.9m)
Stowed Height	10 ft. 4 in. (3.15m)
Width (axles retracted)	8 ft. 6 in. (2.59m)
Width (axles extended)	10 ft. 10 in. (3.30m)
Tailswing	34 in. (.86m)
Gross Weight (approx.)	43,500 lbs.* (19750 kg.)
Engine	Diesel
Travel Speed	2.75 mph (4.43 km/hr)
Gradeability	40% (22 degrees)
Outside Turning Radius	24 ft. 0 in. (7.32m)
Horizontal Reach	60 ft. 0 in. (18.3m)
Tires (Foam Filled)	445/65R x 22.5
Wheelbase	11' 4.5 in. (3.47m)
Ground Clearance	12 in. (33cm)



Godwin's Garage - Ranger Limited
 Triq tal-Balal,
 Tax-Xwieki,
 Għarghur, GHR 9013
 MALTA – EUROPE
 Tel: (+356) 21424771/2/3
 Mob: (+356) 9949 2584, (+356) 7947 8990
 Email: info@godwinsgarage.com
 Web: <http://www.godwinsgarage.com>